



**B A T O**

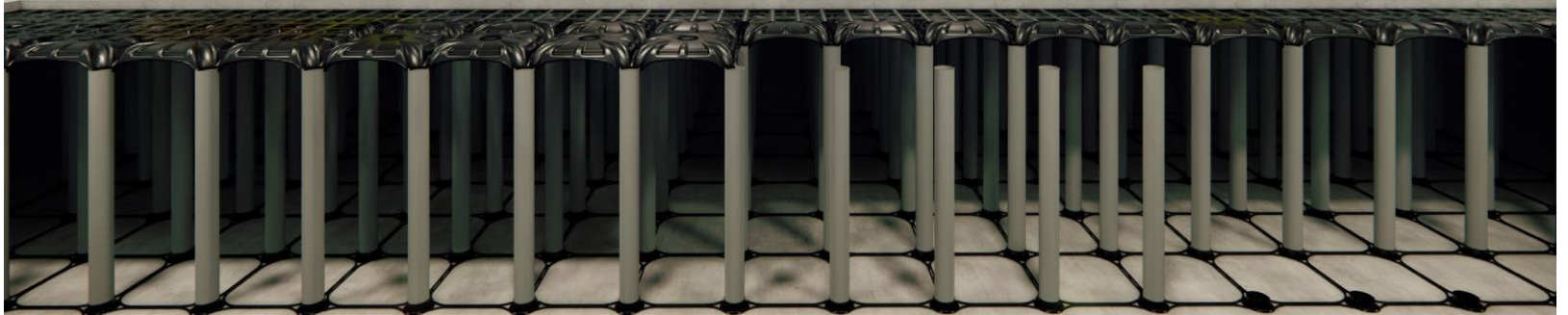
Sustainable lean construction solutions

## **DISPOSABLE FORMWORK SYSTEMS**

### **KUBBE DISPOSABLE FORMWORK SYSTEMS**



**KUBBE DISPOSABLE FORMWORK**



**Kubbe Disposable Formwork System** is a cost-effective and time-saving lightweight construction filling solution that can be used on raised floors in buildings, in projects instead of foundation, sub-basement and landscape fillings, in accordance with the principle of minimum cost and maximum benefit, which constitutes the basic values of lean construction.



**The Kubbe Disposable Formwork System** offers its construction stakeholders speed, simplicity and cost performance in construction.

On the floors where the **Kubbe Disposable Formwork System** is used, a hygienic space is obtained where moisture is prevented. If this space is properly ventilated with the outside using a piping system, it provides the removal of moisture and Radon gas present in the floor.



# BATO

## KUBBE DISPOSABLE FORMWORK

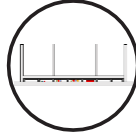
### ADVANTAGES



#### Shipping

It is much lighter compared to conventional fillers, such as gravel and soil, or polystyrene (EPS).

- 1 truck = 25 m3 of soil or gravel
- 1 truck = 85 m3 EPS (polystyrene)
- 1 truck = 22 m3 of aerated concrete
- 1 truck = 1100 m3 Kubbe Permanent Formwork



#### Underfloor Space

Mechanical, electrical and sewage installations can be easily passed through the created space. The cavity provides sound and heat insulation. The gap ensures that moisture, humidity and radon gas from the soil are eliminated with good ventilation.



#### Manufacture

No crane or heavy machinery is required for installation. A worker can assemble 40.m2 formwork per hour. It saves time with an application that is 80% easier and faster than traditional systems. Requires less labor.



#### Flexibility

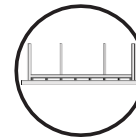
Thanks to its many columns and domes, it can be adjusted up to 3 meters high and can be used for ramps, stairs or different level surfaces.

Since the Dome can be cut, they can also be adapted to non-standard areas.



#### Stocking

Requires less on-site storage as the molds can be stacked



#### Carrying Capacity

As the system consisting of columns and domes has a high load carrying capacity, vehicles and heavy vehicles can pass over it



#### Economic

Minimum use of concrete thanks to its dome form



#### Sustainability

Sustainable as it is produced from recycled plastic and earns projects LEED certification points.

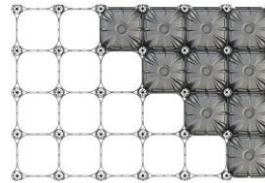
### INSTALLATION



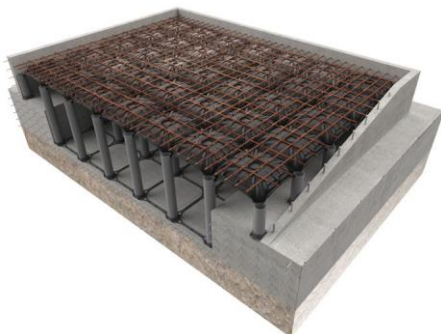
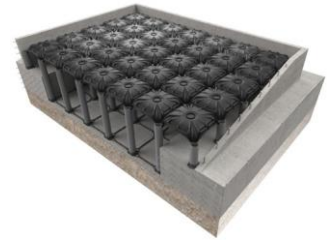
1. Bases and guides are placed.



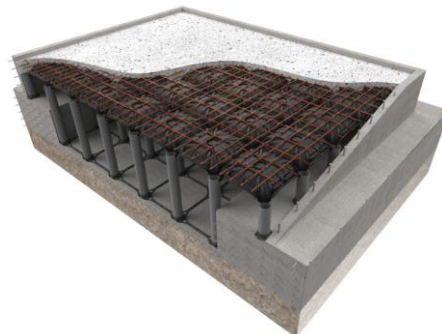
2. Pipes are passed to the feet.



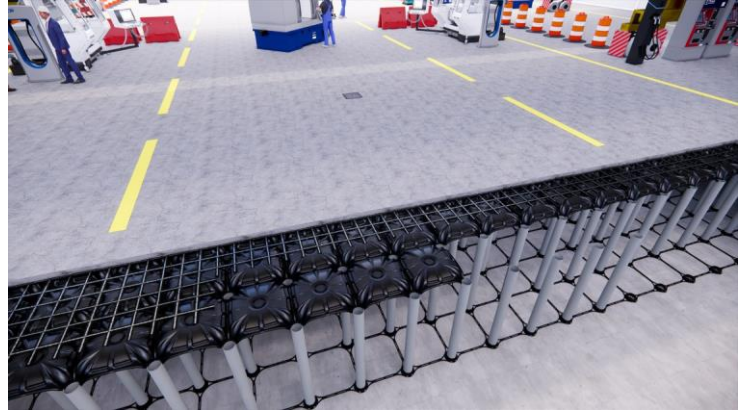
3. Kubbe Disposable Formwork are placed in the pipes from right to left.



4. Steel mesh is placed according to the floor height.



5. First of all, the slab concrete is poured by filling the pipes/columns.



Kurtköy Mah. Ankara Cad. No:289 / 41  
Pendik Istanbul TURKEY

E-mail: [info@batotrade.com](mailto:info@batotrade.com)

www. [batotrade.com](http://batotrade.com)