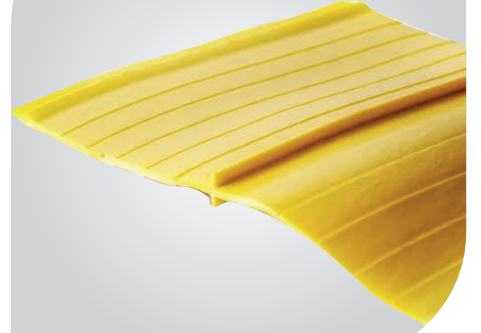
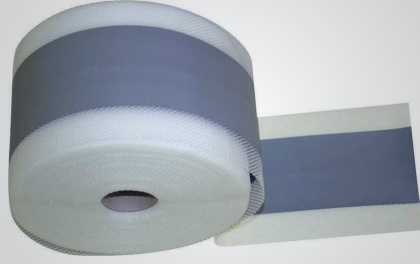
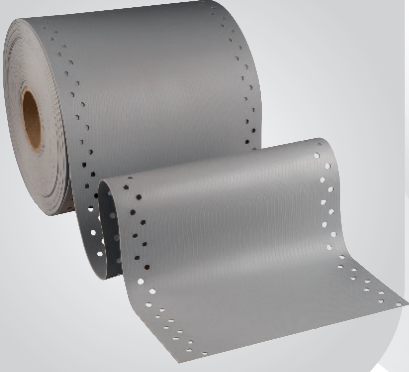




# BATO

## Construction Chemicals

### Catalog



- Expansion Joint Tape
- Chamfer Tape
- PVC Waterstop Tape
- Tpe or Bentonite Swelling Tape
- Butyl Tape



**BATO DIŐ TİCARET LİMİTED ŐİRKETİ**



Kurtk y Mah. Ankara Cad. Yelkan Plaza No:289 /41 Pendik /İST. TURKEY



+90 541 938 34 41



info@batotrade.com



www.batotrade.com

## Definition

Thermoplastic elastomer based, UV resistant dilatation tape used for sealing and insulation of wall and floor joints and all kinds of expansion joints.

## Advantages

- It is resistant to temperature changes and maintains its flexibility in cold up to -30 °C.
- UV resistant. It has high mechanical and tear resistance.
- Suitable for use under soil thanks to its resistance to plant roots.
- BATO EPD Mortar Epoxy based adhesive mortar should be used for bonding Bato Dilatation Tape.
- Resistant to dilute acids and alkaline solutions.

## Areas of use

- Foundation and curtain concrete, building dilatations
- Tunnelling and similar underground structures
- At ridge junctions,
- In building joints and cracks,
- Terrace, balcony, exterior facades,
- Wet volume, parapet on the walls,
- Ponds, waste water units
- Multi-storey car park and parking areas

## Surface Preparation and Application

The application surface should be cleaned from dust, paint, dirt, detergent, etc. and should be clean, dry, smooth and solid. The places where repairs are required on the application surface should be repaired in advance. The dilatation tape must be applied on the deck concrete. If screed or any coating is applied on the deck concrete, it must be cut and trimmed up to the deck concrete.

## Application

The application width should be at least 40 mm for 20 cm wide tape and at least 50 mm for 30 cm wide tape. The areas where the tape application will be made are determined in advance and suitable tape lengths are prepared, the tapes that require splicing are prepared by welding with a hot air gun before application, Bato EPD Mortar adhesive is not used in these processes.

Bato EPD Mortar dilatation tape adhesive is thoroughly spread on the application surface, then the dilatation tape is laid. It is pressed so that the adhesive comes out of the holes of the dilatation tape. Then apply adhesive on the perforated part of the dilatation tape and pinch the tape between two adhesives. The application is made with a thickness of 1,0-1,5 mm and at least 20 mm overhanging the tape. Bato Dilatation Tape should be applied with Bato EPD Mortar epoxy adhesive inward or outward omega shape (Ω).

Before horizontal tape application, polyethylene roving with a diameter of 1 cm more than the dilatation width should be laid in the dilatation gap in areas with high movement and filled with sealant. It is applied in vertical areas with the same bonding method without using polyethylene roving and sealant.

## Storage and shelf life

It can be stored for 5 years in its unopened original packaging in a cool and dry place protected from frost. Pallets should not be stacked on top of each other for long term storage.

## Security measures

- Always read the instructions for use,
- Keep away from children,
- Do not approach with fire
- Suitable protective equipment should be used during application.

## Technical specifications

- Chemical structure TPE (Thermoplastic elastomer)
- Colour Grey
- Width 15-30 cm
- Length 20 m roll
- Thickness 1.00 - 1.5 - 2.00 mm
- Hardness (Shore A) 70
- Service temperature -40 °C / +90 °C
- Elongation at break 600
- Thermal source temperature value 270 °C
- Tear strength > 600 N/cm
- Resistance to water pressure > 8 bar
- Tensile strength > 6 Mpa
- UV resistance > 7500 h
- Bitumen resistance Good
- Sulfuric acid resistance Good
- Good alcohol resistance
- Good detergent resistance

## Points to be considered

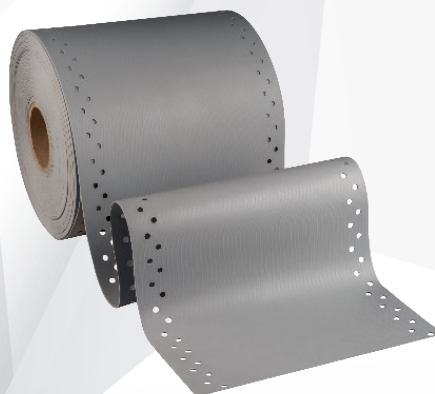
- Care should be taken to apply the Bato dilatation band in omega shape (Ω).
- It should be taken into consideration that the drying time of Bato EPD Mortar will be longer in cold weather.
- Do not apply in rainy weather
- Within 24 hours on surfaces exposed to rain or frost should not be applied.

## Packaging

- 20 mt roll (1 piece)
- 15 cm Perforated (20 mt)
- 20 cm Perforated (20 mt)
- 25 cm Perforated (20 mt)
- 30 cm Perforated (20 mt)

## Quality certificates

ISO 9001:2015



## Definition

Thermoplastic elastomer based, elastic, joint and chamfer tape with Felt or Polyester reinforced edges, used for waterproofing structural joints.

## Advantages

- It has high elasticity,
- Quick and easy to apply,
- Resistant to chemical substances,
- It is resistant to harsh weather conditions, UV rays, impacts and bending,
- It can be used in all kinds of waterproofing works thanks to its easy cutting and gluing by welding,
- It can be easily mechanically fixed thanks to its holes,
- Thanks to its continuous elastic structure, it is resistant to all kinds of movements of the structures.

## Areas of use

- In chamfers in wet rooms,
- In ponds, treatment plants,
- In the chamfers of the water tanks,
- It is used to tolerate and insulate the movements in cold joints and cracks in slabs and curtains with its elastic structure.
- On balconies, parapets,
- It is used on terraces, roof finishes.

## Surface preparation

The application surface should be cleaned from dust, paint, dirt, detergent, etc. and should be clean, dry, smooth and solid. Surfaces requiring repair should be repaired at least one day in advance with a suitable repair mortar.

## Application

Before starting the waterproofing material application, Hammerfast Chamfer Band is cut according to the area to be applied. After the first layer of the sliding based waterproofing material is applied (a little more is applied for the chamfer band to settle well), the chamfer band is laid on the area to be applied and it is ensured to be embedded with waterproofing material. After the first layer of waterproofing material is cured, the process is completed by continuing the application of the other layer of waterproofing material.

## Security measures

- Always read the instructions for use,
- Keep away from children,
- Do not approach with fire
- Suitable protective equipment should be used during application.

## Storage and shelf life

It can be stored for 5 years in its unopened original packaging in a cool and dry place protected from frost. Pallets should not be stacked on top of each other for long term storage.

## Points to be considered

- It should not be applied in high temperature environments.
- Hammerfast Chamfer Tape should be embedded in waterproofing materials when they are wet.
- After the application, waterproofing materials should be brought on the chamfer band.
- Do not apply on surfaces exposed to direct sun and strong wind.
- Do not apply within 24 hours on surfaces exposed to rain or frost.

## Packaging

Available in 10 or 50 meter rolls.

## Quality certificates

- ISO 9001:2015



## Technical specifications

Chemical structure	TPE (Thermoplastic Elastomer) & Felt or Polyester mesh
System width of the material	120 mm
Service temperature	-40 °C / +90 °C
Thickness	0.60 mm
Across the water pressure endurance	1.5 bar







# BATO

## PVC Waterstop Tape

### Product Description

PVC Waterstop Tapes are used in order to provide water tightness in expansion and contraction joints in concrete structures, in construction joints formed in concrete poured at different times since the concrete casting process is not continuous, and to prevent damage to the structure.

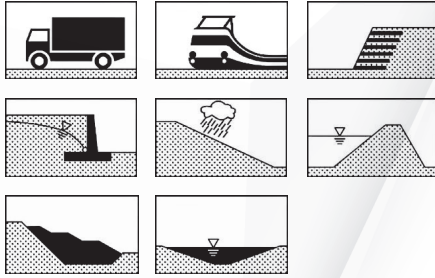
The blend consisting of PVC (Polyvinyl chloride) and various chemical additives and dyestuffs that increase the life and strength of the material is produced by shaping in the extruder at a certain temperature and pressure.

High quality production is carried out on the basis of international standards such as TS 3078, DIN and ASTM and the specifications of institutions such as DSI, HIGHWAYS etc.

\*Rolo sizes are standard values. Different sizes can be produced upon customer request.

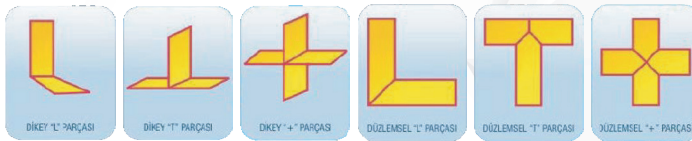
### Areas of Use

- Tunnels
- Metros
- Bridges
- Channels
- Sewerage
- Pools
- Dams
- Treatment Plants
- Water Tanks



### JOINT PARTS

Need for special parts for joining water-retaining tapes together at the needed. These parts are manufactured in our factory according to the needs as shown in the upper and lower figures.



### Technical Specifications

Raw material		Polyvinyl Chloride (PVC)			
Test Methods	Unit	Values		Tolerance	
Tensile Strength	TS 3078-1 & 2	N/mm <sup>2</sup>	Average Value	14	- 10%
			Smallest Value	12	
Elongation Rate	TS 3078-1 & 2	%	Average Value	225	- 10%
			Smallest Value	200	
Degree of Hardness	TS 3078-1 & 2	Shore A	80	± 5	
Unit Volume Mass	TS 3078-1 & 2	g/cm <sup>3</sup>	1,27	± 0,04	
Water Absorption by Mass Ratio	TS 3078-1 & 2	%	≥ 1,5		
Ash by Mass	TS 3078-1 & 2	%	≥ 5		
Width	TS 3078-1 & 2	mm	According to Belt Type		
Thickness	TS 3078-1 & 2	mm	According to Belt Type		

TIP	BANT ŞEKLİ	ÖLÇÜLERİ																UYGULAMA SEKİLİ	KULLANILMA YERLERİNDEKİ DERZ VE AÇIKLAMALAR	
A		Genişlik ( cm )	15	15	15	15	20	20	22	23	23	25	25	25	30	30	30	MERKEZİ	DÜŞÜK, ORTA VE YÜKSEK DERECEDEKİ GENİŞLEME HAREKETLERİNDE, AKAKALAMA VE HER ŞİDDETTEKİ SU BASINÇINDA.	
		Kanat Kalınlığı(mm)	4	5	6	7	10	5	7	10	7	10	5	6	8	10	6			7
O		Genişlik ( cm )	15	15	15	20	20	22	22	26	26	26	30	30	32	32	32	MERKEZİ	DÜŞÜK, ORTA VE YÜKSEK DERECEDEKİ GENİŞLEME HAREKETLERİNDE, AKAKALAMA VE HER ŞİDDETTEKİ SU BASINÇINDA.	
		Kanat Kalınlığı(mm)	3	4	5	3	4	5	4	5	6	4	5	6	5	6	4			5
OL		Genişlik ( cm )	20	20	25	25	25	30	30	30	30	32	32	32	35	35	35	MERKEZİ	DÜŞÜK, ORTA VE YÜKSEK DERECEDEKİ GENİŞLEME HAREKETLERİNDE, AKAKALAMA VE HER ŞİDDETTEKİ SU BASINÇINDA.	
		Kanat Kalınlığı(mm)	5	6	10	5	6	7	8	7	8	9	10	5	8	10	8			9
B		Genişlik ( cm )	15	15	15	15	20	20	20	20	23	25	25	25	25	30	30	30	MERKEZİ	SABİT VE GENİŞLEMESİZ İNŞAAT DERZLERİNDE VE DARALMA DERZLERİNDE ALÇAK VE YÜKSEK SU BASINÇINDA.
		Kanat Kalınlığı(mm)	5	7	8	10	5	6	7	8	10	10	5	6	8	10	6	7		
I		Genişlik ( cm )	15	15	15	20	20	20	25	25	25	30	30	30	30	30	30	MERKEZİ	SABİT VE GENİŞLEMESİZ İNŞAAT DERZLERİNDE VE DARALMA DERZLERİNDE ALÇAK VE YÜKSEK SU BASINÇINDA.	
		Kanat Kalınlığı(mm)	3	4	5	4	5	6	8	4	5	6	8	4	5	6	7			8
V		Genişlik ( cm )	15	15	15	20	20	20	20	25								MERKEZİ	İNŞAAT, DARALMA DERZLERİNDE VE HAFTIFISAL DEĞİŞİM BULUNDUĞU DERZLERDE YÜKSEK SU BASINÇINDA.	
		Kanat Kalınlığı(mm)	3	4	5	4	5	6	7	8	4									
M		Genişlik ( cm )	20	20	20	25	25	25	25	30	30	30						MERKEZİ	YÜKSEK DERECEDEKİ GENİŞLEME HAREKETLERİNDE AKAKALAMA HAREKETLERİNDE VE YÜKSEK ŞİDDETTEKİ SU BASINÇINDA, ÇOKMİSERLİ FAYLA OLUŞUĞU YAPILARDA.	
		Kanat Kalınlığı(mm)	4	5	6	8	4	5	6	8	10	5	6	7						
DO		Genişlik ( cm )	20	20	20	25	25	25	25	30	30	35						MERKEZİ	GENİŞLEME DERZLERİNDE, ORTA ŞİDDETTEKİ GENİŞLEMEDE VEYA AKAKALAMA HAREKETLERİNDE, DÜŞÜK SU BASINÇINDA.	
		Kanat Kalınlığı(mm)	4	5	6	8	4	5	6	8	6									
DI		Genişlik ( cm )	20	20	20	25	25	25	25								MERKEZİ	İNŞAAT DERZLERİNDE VE DARALMA DERZLERİNDE, DÜŞÜK SU BASINÇINDA.		
		Kanat Kalınlığı(mm)	4	5	6	8	4	5	6											
DT		Genişlik ( cm )	20	20	20	25	25	25	25								MERKEZİ	İNŞAAT DERZLERİNDE VE DARALMA DERZLERİNDE, DÜŞÜK SU BASINÇINDA.		
		Kanat Kalınlığı(mm)	4	5	6	8	4	5	6	8										
AK		Genişlik ( cm )	20	20	24	24	24	24									MERKEZİ	İZEMİN SAĞLAM GENİŞLETME İNŞAAT DERZLERİNDE (GENELLENİLE YÜKSEK HAVUZLARI VE KÜÇÜK TONNALLI SU DEPOLARINDA).		
		Kanat Kalınlığı(mm)	3	4	5	3	4	5	6											





### Definition

**Bato TPE**, is a thermoplastic-based or bentonite-based swelling tape suitable for use in concrete joints, construction joints and cold joints, and aids waterproofing.

### Areas of use

- Cold joints and construction joints,
- Foundation and curtain wall concretes,
- Old and new concrete settlements,
- Retaining curtains,
- Water tanks and pools,
- Tunnels, subways, dams, motorways, etc. all kinds of constructions,
- Sewerage, water treatment plants and manholes,
- Underground pipe and cable crossings,

### Advantages

- Thanks to its flexibility and suitable cross-sectional dimensions, it is easily applied to all kinds of folds and grooves on the surface.
- It has fast and high expansion capacity.
- It has infinite and reversible expansion (capacity to return to its original state).
- Maintains dimensional stability even at high temperatures.
- Suitable for contact with groundwater, tap water, salt water, pure water and alkaline water (cemented water).
- Thanks to its dimensions, it is easy to apply even in areas with excessive reinforcement.
- No primer required.
- This dimensional change enables the material to form a water barrier within the reinforced concrete structure and to fill possible voids.

### Points to Consider

- Store in dry and non-humid areas, protected from direct sunlight.
- Pay attention to surface cleanliness and smoothness.
- Not suitable for use in expansion joints.
- Previously deformed tapes are not suitable for use.

### Method of Use

#### Surface Preparation:

- For very rough surfaces, necessary corrections should be made with repair mortars before application.
- The substrate must be durable and clean for application.

#### Implementation:

- Application should be made at least 8 cm from the area of the concrete that will be exposed to water.
- Application can be done with suitable mounting adhesive or nailing method.
- In the nailing method, nails can be applied at 15 cm intervals.
- At the junction point of the two bands, the bands are brought 50 mm side by side and joined.
- The surface may be damp during application, but there should be no puddles.

### Packaging

20 mt/roll in 5 x 20 mm width 10 mt/roll in 10 x 20 mm width

### Storage and Shelf Life

Store in a closed, dry and clean environment in its original packaging. Shelf life is 24 months.



### Technical Specifications

Basis TPE	(Thermoplastic elastomer)
Dimensions:	5 x 20 mm / 10 x 20 mm
Density:	Approx. 1,25 g/cm <sup>3</sup> Expansion
Pressure:	Approx. 1,06 N/mm <sup>2</sup> Fire
Class:	Class E (DIN EN 13501-1)
Swelling Capacity	> %400
Dangerous Chemicals	None



## Product Description

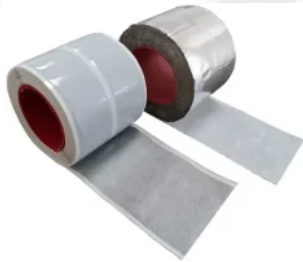
Self-adhesive Tape BATO BUTLY 10 cm is a waterproofing bitulyl tape, 10 cm wide, with metallic self-protection (1.1 kg/m<sup>2</sup>). Composed of a SBS modified bitulyl mastic, using as protective material on the upper side of the sheet aluminium foil (50 micron) in natural colour. The anti-adherent material used on the lower side is polyethylene film. Used for small leaks, chimneys, in carpentry, etc.

## ADVANTAGES And FEATURES

- It fits very well with all known material surfaces.
- It has a wide variety of components in sealing systems that provide good adhesion properties, which are well compatible with metals, concrete, masonry, wood, glass, hard PVC, bitumen, paint systems.
- It has high resistance to UV rays, bad weather and water.
- It can be used both indoors and outdoors.
- Leak proof against steam diffusion.
- It shuts off by itself.

## METHOD FOR APPLICATION

- The application surfaces must be dry, clean and free from free particles.
- The areas to be applied are determined, the appropriate tape lengths are prepared, and the silicone paper material is adhered to the surface to be removed. It is pressed with a roller to ensure perfect adhesion.



## Areas Of Use

- For sealing in the construction industry.
- It is used at the joints and ends of curtain wall panels.
- As sound absorber and vibration absorber in the automotive and household appliances industry.
- For air tightness in ventilation ducts.
- For waterproofing in modular metal water tanks.

## STORAGE And SHELF LIFE

- In unopened original packaging, cool and dry should be stored in the environment, protected from frost. Short for long-term storage, maximum 2 pallets on top of each other and should be used on a first-in, first-out system.
- 18 months from the date of production under appropriate storage conditions. Opened and unmixed products should be consumed within maximum 2 days.

## Product Code and Packing

- BUTN10 Bato Butily Net 100mm (12 Roll 10mt) 120mt. / box  
30 Box per pallet total 3600 meters per pallet,
- BUTA10 Bato Butily Alum.100mm (12 Roll 10mt) 120mt. / box  
30 Box per pallet total 3600 meters per pallet,
- BUTN15 Bato Butily Net 150mm (6 Roll 10mt) 60mt. / box

## Safety Warnings

- Smoking should be avoided. Care should be taken to ensure continuous ventilation of the application area.
- Protective equipment such as goggles and gloves should be used during application.
- The product should be consumed by professional users, taking into account the data in the technical data section.

## Technical Specifications

Chemical Composition	Butyl Rubber
Color	White or Aluminum (Other colors are upon request.)
Thickness	1mm
Density	1-1,2 gr/cm <sup>2</sup>
Water Absorption	Can be neglected.
Application Temperature	+5 – +30 °C
Temperature Resistance	-40 – + 120 °C
Resistance to Chemicals	High
Resistance to External Environment	High
Shelf Life	Under appropriate storage conditions,12 months.

